



Strategies for Coastal Resilience in Fort Lauderdale

New Partners for Smart Growth, Portland, OR February 12



CITY OF FORT LAUDERDALE

Nancy J. Gassman, Ph.D. – Assistant Public Works Director

ABOUT FORT LAUDERDALE

- Encompasses nearly 33 square miles
- Population of ~ 170,000
- Daytime population ~255,000
- 7 miles of public beach
- 165 miles of canals and waterways
- Equates to 337 miles of shoreline



CITY OF FORT LAUDERDALE

OUR CLIMATE CHALLENGES AND LIMITATIONS

- ✓ High groundwater table
- ✓ Low-lying residential streets
- ✓ Sea level rise
- ✓ Extreme weather
- ✓ Low and deteriorating seawalls
- ✓ Aging infrastructure
- ✓ Absence of stormwater infrastructure
- ✓ Lack of green space



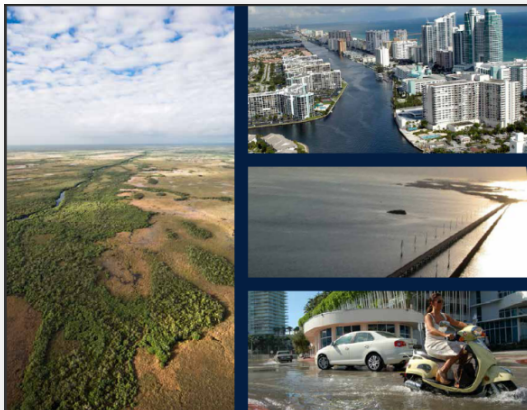


WE ARE READY

CONNECTING THE DOTS

We are a resilient and safe coastal community

Regional Vision and Action Plan 2017



A Region Responds to a Changing Climate

Southeast Florida Regional Climate Change Compact Counties

Regional Climate Action Plan

October 2012



Municipal Vision Plan 2035

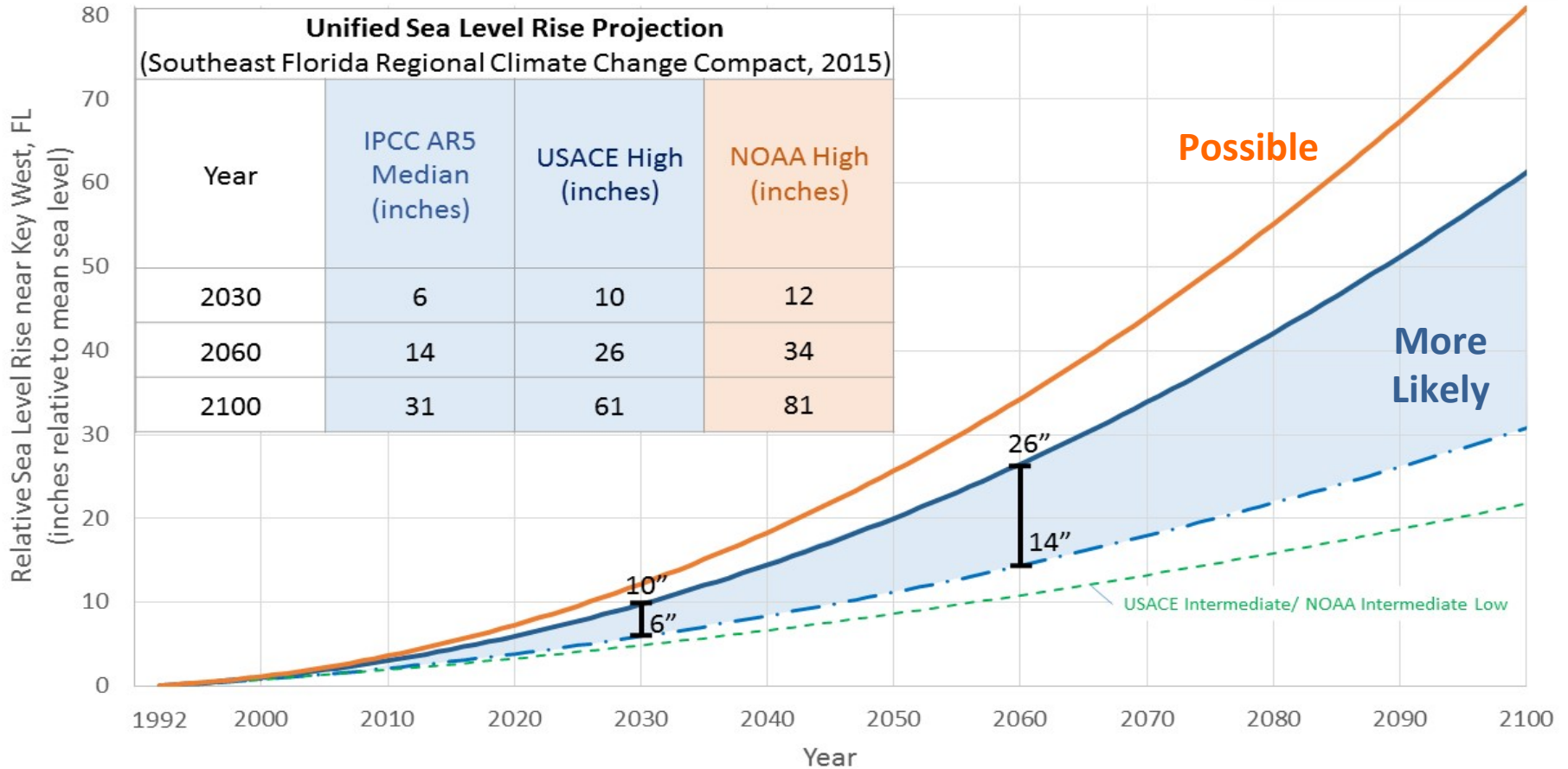
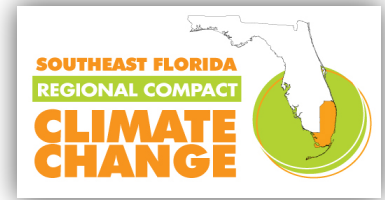


Municipal Action Plan 2018



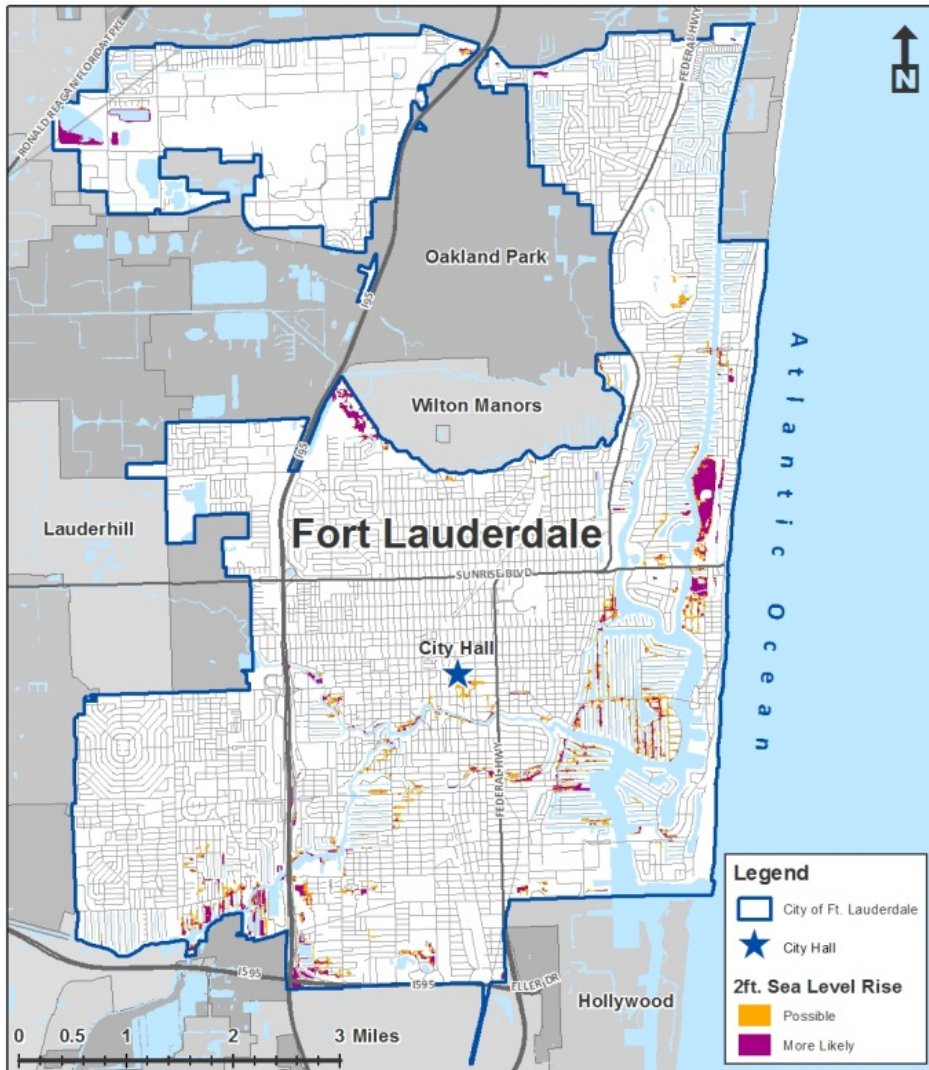
December 15, 2015 Resolution:

Use of this projection for the purposes of **sea level rise adaptation planning** activities.



CITY OF FORT LAUDERDALE

Municipal Scale Inundation Map Two Foot Sea Level Rise



Fort Lauderdale Sea Level Rise Vulnerability Assessment

- * Airports
- * Bridges
- * City Arterial Roads
- * City Hall
- * City Parks
- * Community Re-development Areas (CRA)
- * County Parks
- * Evacuation Routes
- * Fire Rescue Stations
- * Hospitals
- * Law Enforcement Assets
- * Schools
- * WTP/WWTP
- * Wave
- * Regional Activity Centers (RAC)

This map is for conceptual purposes only and should not be used for legal boundary determinations.

BROWARD COUNTY
Prepared By: H. Ziegler
Environmental Protection and Growth Management Department
Natural Resources Planning and Management Division

Date: 11/12/2013
DEP Agreement No. CM238 DEP 55-236(08/11)



CITY OF FORT LAUDERDALE
PUBLIC WORKS DEPARTMENT



CITY OF FORT LAUDERDALE

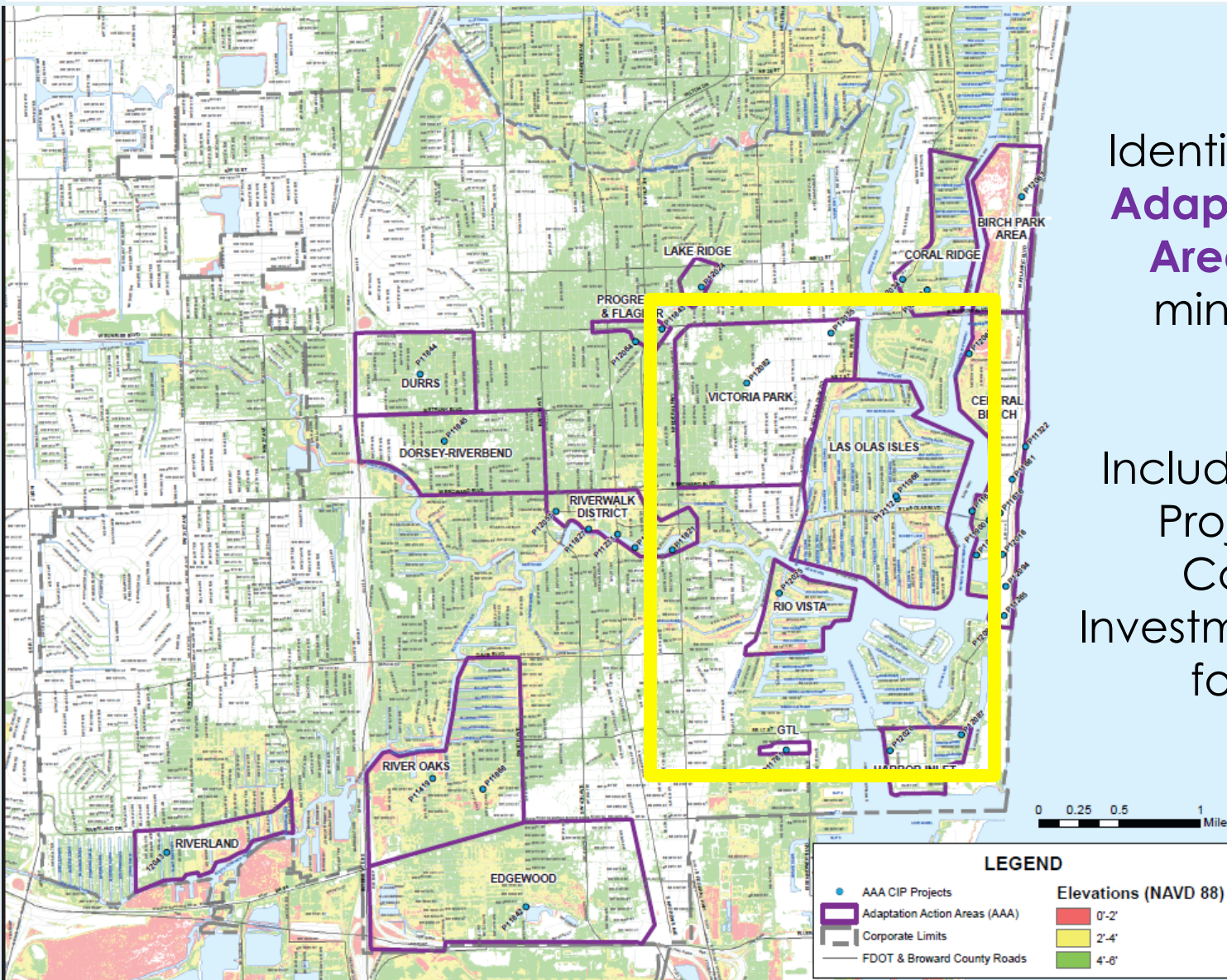


Designated Adaptation Action Areas and Projects

FY 2016-2020

Identification of **16 Adaptation Action Areas** meeting minimum AAA criteria

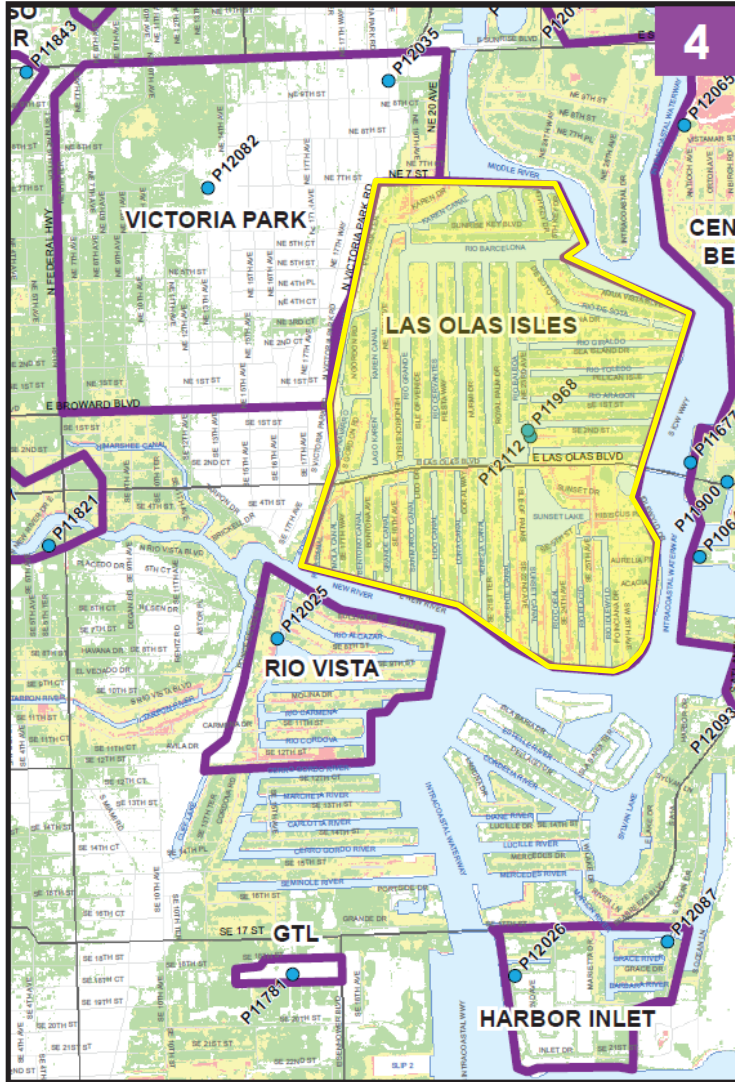
Includes **38** Capital Projects in the Community Investment Plan (CIP) for funding





Designated Adaptation Action Areas and Projects

FY 2016-2020



GTL - GEORGE T. LOHMEYER WASTEWATER TREATMENT PLANT (see map 4)

P11781 Cryogenic Plant

HARBOR INLET (see map 4)

P12026 2100 SE 18Th Street Stormwater Improvements

P12087 Bridge Replacement At South Ocean Drive

LAS OLAS ISLES (see map 4)

P12112 Del Mar Stormwater Improvements

P11968 Seven Isles Seawall Improvements

RIO VISTA (see map 4)

P12025 1436 Ponce De Leon Drive
Stormwater Improvements

VICTORIA PARK (see map 4)

P12082 Victoria Park Tidal And Stormwater Improvements

P12035 1000 NE 17Th Way Stormwater Improvements

LEGEND

- AAA CIP Projects
- Adaptation Action Areas (AAA)
- Corporate Limits
- FDOT & Broward County Roads

Elevations (NAVD 88)

- 0'-2'
- 2'-4'
- 4'-6'



WE ARE READY

We are a resilient and safe coastal community.

Questions?

Nancy J. Gassman, Ph.D.
ngassman@fortlauderdale.gov